



**Masterson Close, Wellesley, Aldershot**



# Masterson Close, Wellesley, Aldershot

- Excellent order throughout
- Two double bedrooms
- Built in storage
- Modern building
- Long lease

*Located in the sought-after Wellesley development in Aldershot, this immaculate two-bedroom second-floor apartment offers modern style, generous space, and a dedicated parking bay. With a 999-year lease and a prime position close to amenities and transport links, it delivers both convenience and long-term security. Competitively priced, it represents exceptional value for a home in one of the area's most desirable locations.*

Situated within the highly sought-after Wellesley development in Aldershot, this superb second-floor apartment combines contemporary style with exceptional comfort. Offering two generously proportioned double bedrooms, it is perfectly suited to couples, small families, or anyone seeking a spacious, well-designed home.

The bright and inviting reception room



provides an ideal setting for both relaxation and entertaining, while the property's immaculate, almost-new condition allows you to move straight in and enjoy its modern finishes and fresh, welcoming atmosphere. The bathroom has been thoughtfully designed with both style and practicality in mind, ensuring it meets everyday needs with ease.

A dedicated parking space for one vehicle adds valuable convenience, particularly in this desirable location. Further enhancing its appeal, the property benefits from an impressive 999-year lease, providing long-term security and peace of mind.

Positioned in Masterson Close, the apartment enjoys all the advantages of a vibrant community, with excellent local amenities, green spaces, and well-connected transport links nearby. It offers the perfect balance between peaceful residential living and easy access to everything you need. Competitively priced, it represents outstanding value for money in one of the area's most desirable addresses.

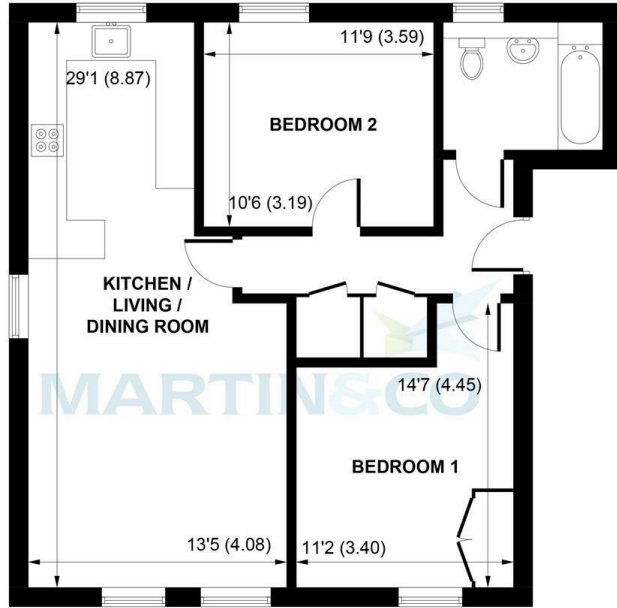
In short, this two-bedroom apartment in Wellesley is a rare opportunity — a home that blends modern living, prime location, and a strong sense of community. Whether you're searching for your next home or a high-quality investment, this property is sure to stand out.

Tenure: Leasehold  
Service Charge: £155.12 PA  
Ground Rent; £1038.23  
EPC: B  
Council Tax Band: C



### Myers House, Aldershot

Approximate Gross Internal Area = 70.2 sq m / 756 sq ft



#### SECOND FLOOR

This plan is for layout guidance only. Not drawn to scale unless stated. Windows and door openings are approximate. Whilst every care is taken in the preparation of this plan, please check all dimensions, shapes and compass bearings before making any decisions reliant upon them. (ID 1229802)  
Produced by BlueSky Estate Agency Services on behalf of Martin&Co

Energy Efficiency Rating		Current	Potential
Very energy efficient - lower running costs			
(92 plus) <b>A</b>			
(81-91) <b>B</b>		<b>85</b>	<b>85</b>
(69-80) <b>C</b>			
(55-68) <b>D</b>			
(39-54) <b>E</b>			
(21-38) <b>F</b>			
(1-20) <b>G</b>			
Not energy efficient - higher running costs			
<b>England &amp; Wales</b>		EU Directive 2002/91/EC	

Environmental Impact (CO <sub>2</sub> ) Rating		Current	Potential
Very environmentally friendly - lower CO <sub>2</sub> emissions			
(92 plus) <b>A</b>			
(81-91) <b>B</b>			
(69-80) <b>C</b>			
(55-68) <b>D</b>			
(39-54) <b>E</b>			
(21-38) <b>F</b>			
(1-20) <b>G</b>			
Not environmentally friendly - higher CO <sub>2</sub> emissions			
<b>England &amp; Wales</b>		EU Directive 2002/91/EC	



**Martin & Co Aldershot**  
173 Victoria Road, Aldershot, Hampshire,  
GU11 1JU  
Aldershot@martinco.com

**01252 311974**  
<http://www.martinco.com>



**Accuracy:** References to the Tenure of a Property are based on information supplied by the Seller. The Agent has not had sight of the title documents. A Buyer is advised to obtain verification from their Solicitor. Items shown in photographs including but not limited to carpets, fixtures and fittings are not included unless specifically mentioned within the sales particulars. They may however be available by separate negotiation. Buyers must check the availability of any property and make an appointment to view before embarking on any journey to see a property. No person in the employment of the agent has any authority to make any representation about the property, and accordingly any information given is entirely without responsibility on the part of the agents, sellers(s) or lessors(s). Any property particulars are not an offer or contract, nor form part of one. **Sonic / Laser Tape:** Measurements taken using a sonic / laser tape measure may be subject to a small margin of error. **All Measurements:** All Measurements are Approximate. **Services Not tested:** The Agent has not tested any apparatus, equipment, Fixtures and Fittings or services and so cannot verify that they are in working order or fit for the purpose. A Buyer is advised to obtain verification from their Solicitor or Surveyor.

